

NEO MARBLE

FROM THE HOUSE OF HAIQUE



ELEVATED LIVING
haique®
— Luxury Surfaces —



We have crossed another milestone as we launch our new
marble and terrazzo surfaces collection.

www.haiquequartz.com



"We are very proud to welcome
Vaani Kapoor to the Haique family.

Like us, she is also a growing national
icon with only the sky as her limit."

Siddhant Lunawath
Co - Founder

Vaani Kapoor

FOUNDER'S DESK



Building A Global Brand

At Haique, we believe in a relationship-based business, and our associates are the cornerstone to its success. We have high aspirations from our team, and they have accomplished them all. Our team members are passionate about their profession and are always keen to learn more about their customers' needs, new technologies and concepts. We constantly strive to provide our customers with what they want, which includes: Product quality above their expectation, world-class services, and great value for money.

In the trust sense of the term, Haique is a designer's brand, instantly recognisable by its stunning inventive looks that have a class with originality in design and visual aesthetics. The brand emanates a sense of achievement and prestige. Our objective is to establish Haique as the unrivaled leader and the ultimate destination for kitchen countertops, vanities, and various interior solutions.

Haique is exporting its products to discerning clients worldwide, across 30+ countries including the United States, the United Kingdom, Europe and the Gulf countries.

Haique surfaces are influenced by the global culture and human sentiment bringing together the finest design talent together with best in engineering & technology. Haique surfaces are created from top quality raw materials and finished with Breton polish to give our slabs an edge in terms of quality.

Our "Make in India" goal is widely acknowledged, with our products shipped to most developed countries around the globe. Haique's commitment to excellence and customer satisfaction will always remain strong.

A B O U T U S

If you thought stone was antiquated, think again. Haique is the foremost fashion brand for quartz surfaces, inspired by the ever-changing global culture, colour trends and living choices. Haique creates high-end quartz surfaces for a variety of tastes and styles.

Haique's engineered surfaces are the world's largest seamless slabs, infused with spectacular designs and patterns. Haique quartz surfaces are made to enhance lifestyle and transform table tops.

Haique is owned and operated by Aravali Group, a mining and mineral conglomerate and Gattani Group, a multi-faceted conglomerate with prominent presence in polymers and clean energy. Aravali Group's journey began 45 years ago with the mineral extraction of the treasured Aravali onyx marble, soapstone & exotic granites.

With the changing global trends, Aravali and Gattani Groups chose to join hands and foray into the production of quartz surfaces. Today, Haique operates its own quartz mines, quartz grits and powder processing plants and a highly advanced resin manufacturing facility.

To top it off, a highly efficient team of talented people make the strength of the company unmatched.

THE COLLECTION

Inspired by the world's fashion capitals: New York, Tokyo, London, Paris, Milan and Rome, we've imbued the soul of these cities into our fashionable and luxury surfaces. Our end-users enjoy the trend of segmenting our product line with fashionable cities based on their preferences.

www.haiquequartz.com



X
E
D
N
I

1



NEW YORK
COLLECTION

2



TOKYO
COLLECTION

3



LONDON
COLLECTION

4



PARIS
COLLECTION

5



MILAN
COLLECTION

6



ROME
TERRAZZO COLLECTION



Somewhere between living
and breathing there is NEW YORK

NEW YORK COLLECTION

New York is one of the most well-known cities in the world. This dynamic metropolis is acclaimed for its luxury shops, spectacular Broadway musicals, and high-flying corporate tycoons. After researching about this city, we have deduced that New York is quite modern and functional. So, we created designs that match the spirit of this city. In this collection you will find modern and functional slab designs inspired by the new world's capital. We are depicting the nature of city life in our considerably functional products.

www.haiquequartz.com

NEW YORK
COLLECTION



ELEVATED LIVING®
haique
— Luxury Surfaces —



Lincoln White
Size: 3250 x 1650 x 15 mm



Lincoln Beige
Size: 3250 x 1650 x 15 mm

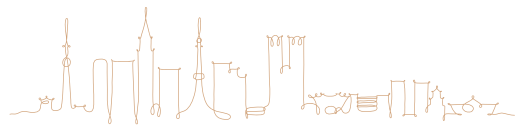


TOKYO is not just a city,
its a world

TOKYO COLLECTION

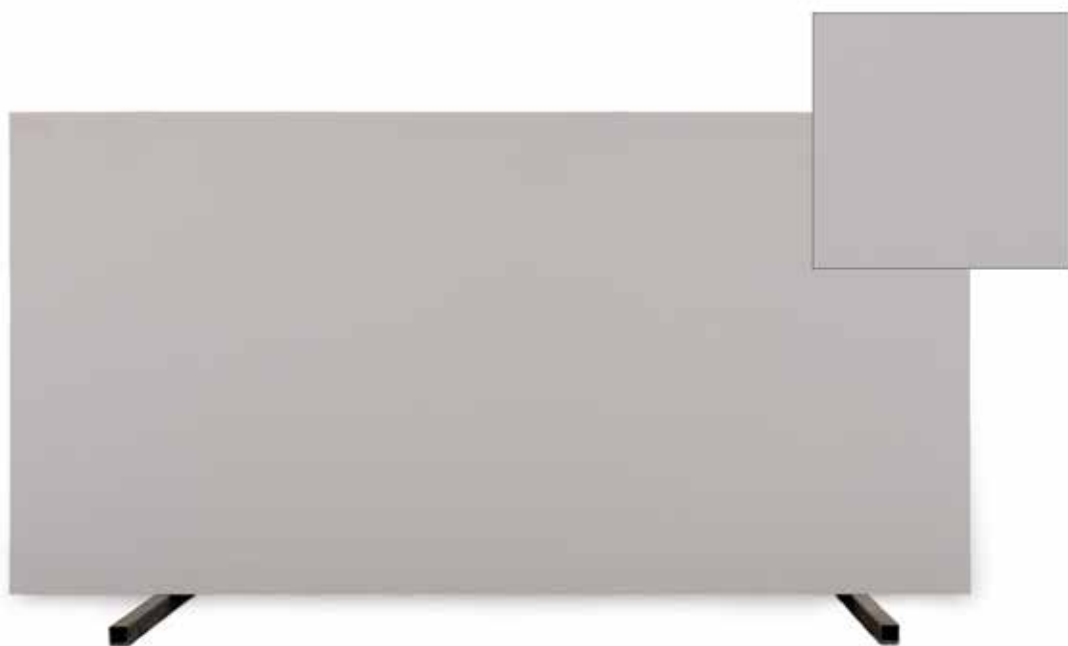
Tokyo is one of the world's most influential fashion capitals, and several of its districts are noted for their particular aesthetics. Harajuku is where you'll find mind bending fusions of traditional and modern designs. The city is a mix of the ultramodern and the traditional lives, from neon-lit skyscrapers to historic temples. In this collection of Haique, you will find the city's minimal, futuristic and fashionable take on its products. Haique's Tokyo collection, just like the city, is all about the amalgamation of minimalism with its take on modernity.

www.haiquequartz.com



T O K Y O
COLLECTION

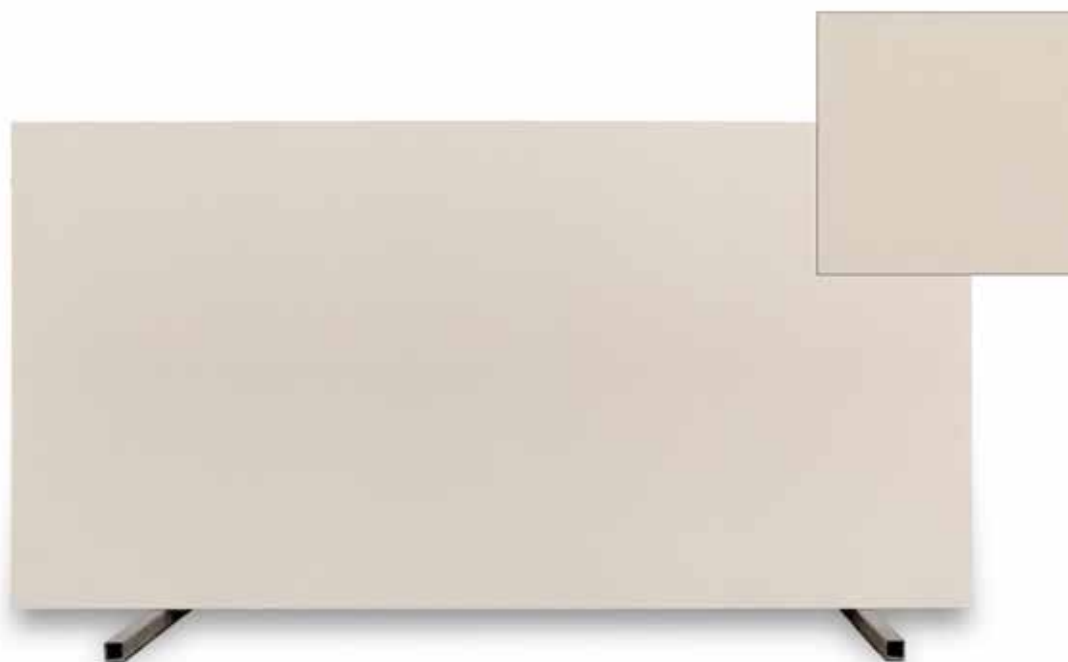
ELEVATED LIVING®
haique
— Luxury Surfaces —



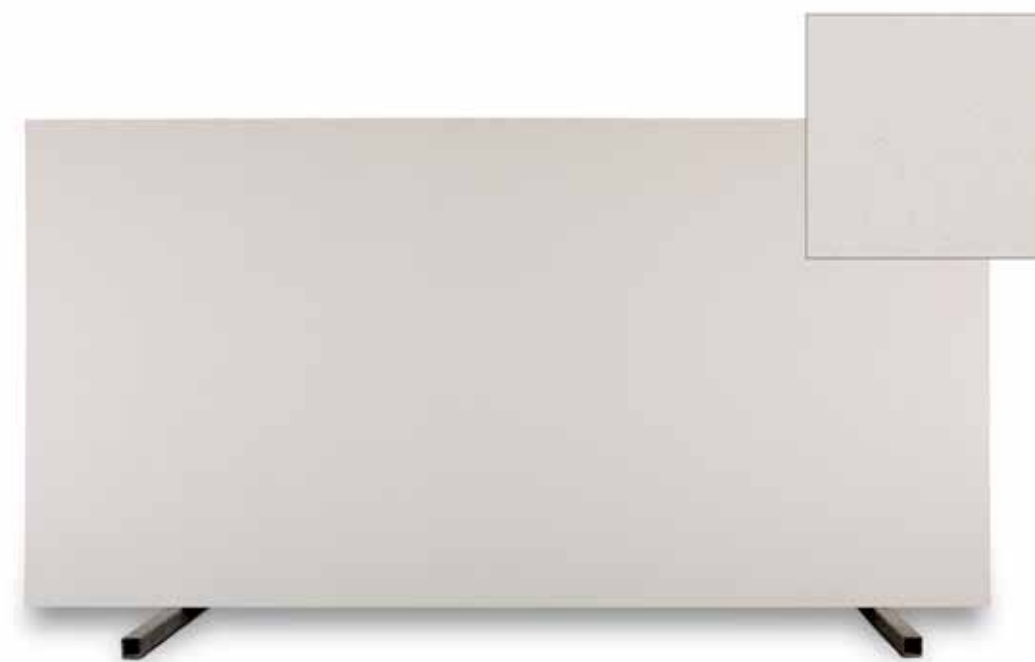
Osaka Grey
Size: 3250 x 1650 x 15 mm



Abe White
Size: 3250 x 1650 x 15 mm



Kyoto Beige
Size: 3250 x 1650 x 15 mm

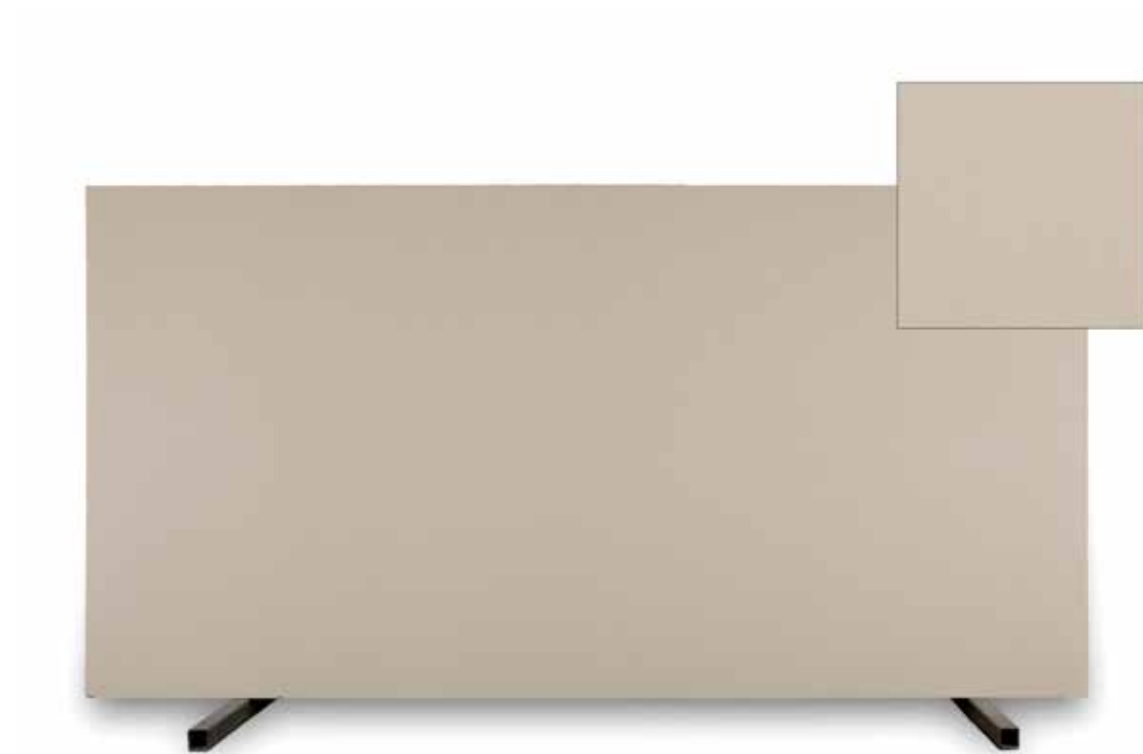


Akai Concrete
Size: 3250 x 1650 x 15 mm

TOKYO
COLLECTION



ELEVATED LIVING
haique[®]
— Luxury Surfaces —



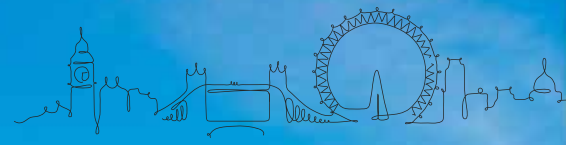
Shinzo Cream
Size: 3250 x 1650 x 15 mm



A bad day in LONDON is still
better than a good day anywhere else

L O N D O N C O L L E C T I O N

London is a significant player in the fashion industry and has rightfully earned its place as one of the essential iconic fashion hubs in the world. London is home to some of the most successful British high-end fashion designers. They are an inspiration to us with their timeless and classic designs. While designing this collection, we kept in mind the colourful streets of Notting Hill. We tried to incorporate the lifestyle of this fashionable city in our collection, like the perfect finish with classic colours and timeless designer slabs.



LONDON
COLLECTION



ELEVATED LIVING[®]
haique
— Luxury Surfaces —



Moira Ice
Size: 3250 x 1650 x 15 mm



James White
Size: 3250 x 1650 x 15 mm

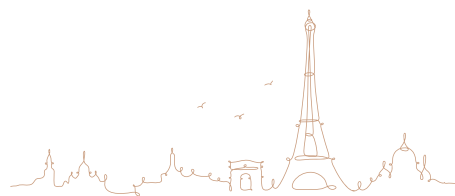


PARIS exists to remind us
that all our dreams are real

PARIS COLLECTION

Why is Paris the fashion hub of the world today? Simply because, despite the decrease in the number of couture houses, little has changed. Haique retains the same spark of Paris in its products. Inspired by the city's avant-garde fashion houses, we have set the global benchmark for designs. We are developing designer slabs inspired by the city's exquisite fashion houses. We have tried to retain the city fashion in our slabs by incorporating its trendy and timeless designs.

www.haiquequartz.com



P A R I S
COLLECTION



Lyon White
Size: 3250 x 1650 x 15 mm



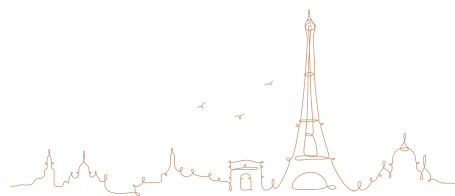
Luxembourg Grey
Size: 3250 x 1650 x 15 mm



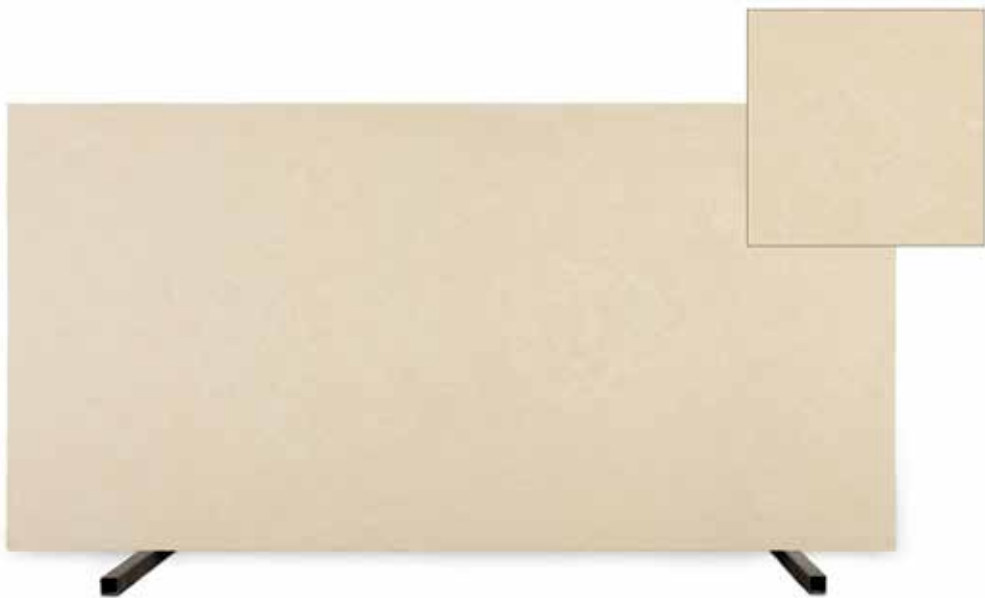
Mont Blanc
Size: 3250 x 1650 x 15 mm



Camellias
Size: 3250 x 1650 x 15 mm



P A R I S
COLLECTION



Magnus Beige
Size: 3250 x 1650 x 15 mm



Cafe Marrone
Size: 3250 x 1650 x 15 mm



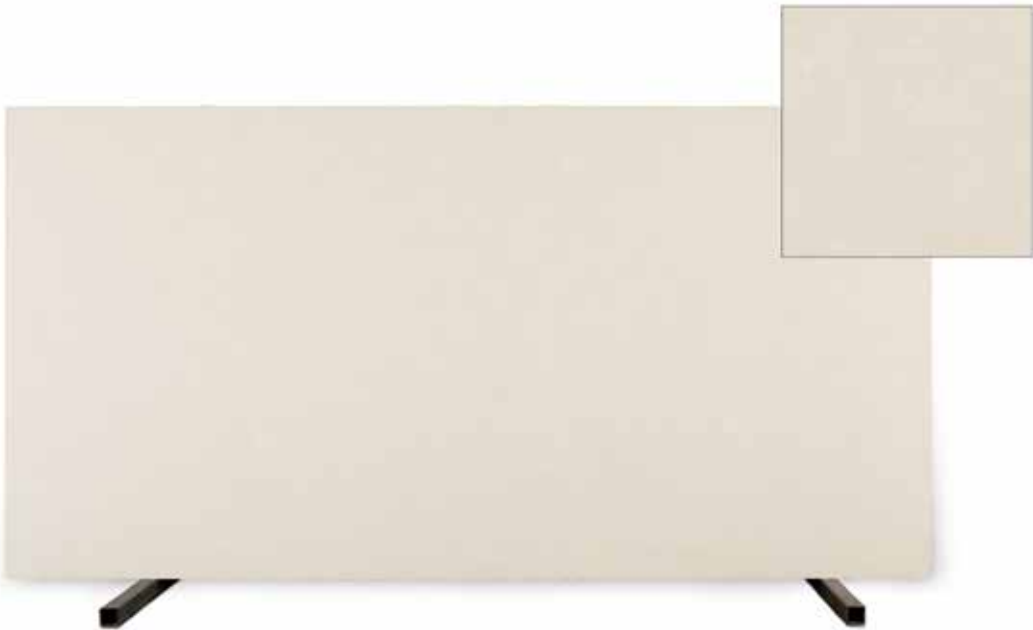
Emprador Scuro
Size: 3250 x 1650 x 15 mm



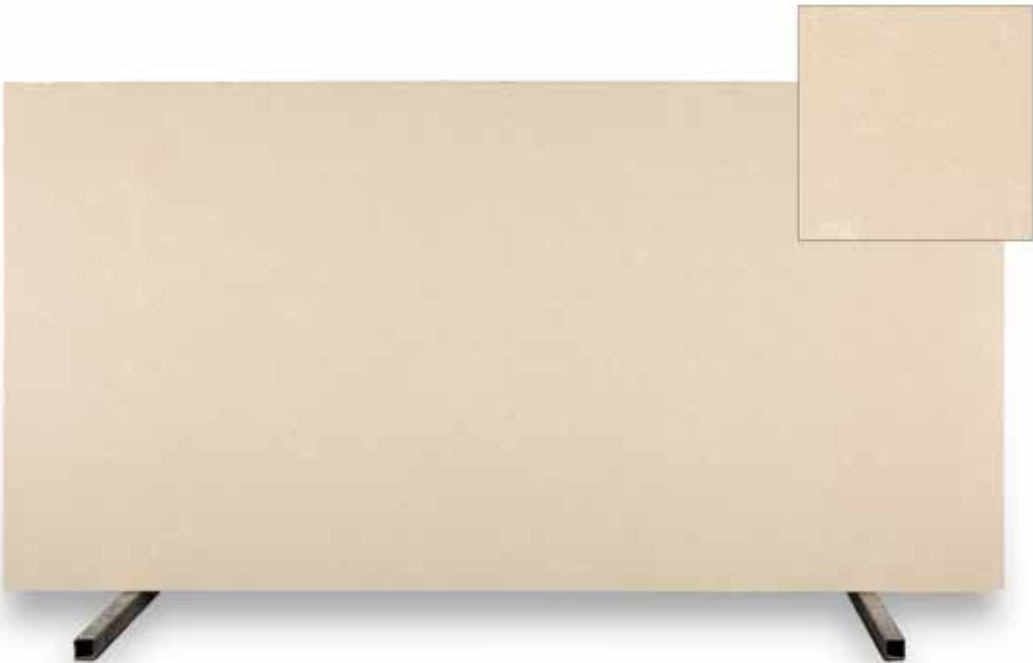
Emprador Brown
Size: 3250 x 1650 x 15 mm



P A R I S
COLLECTION



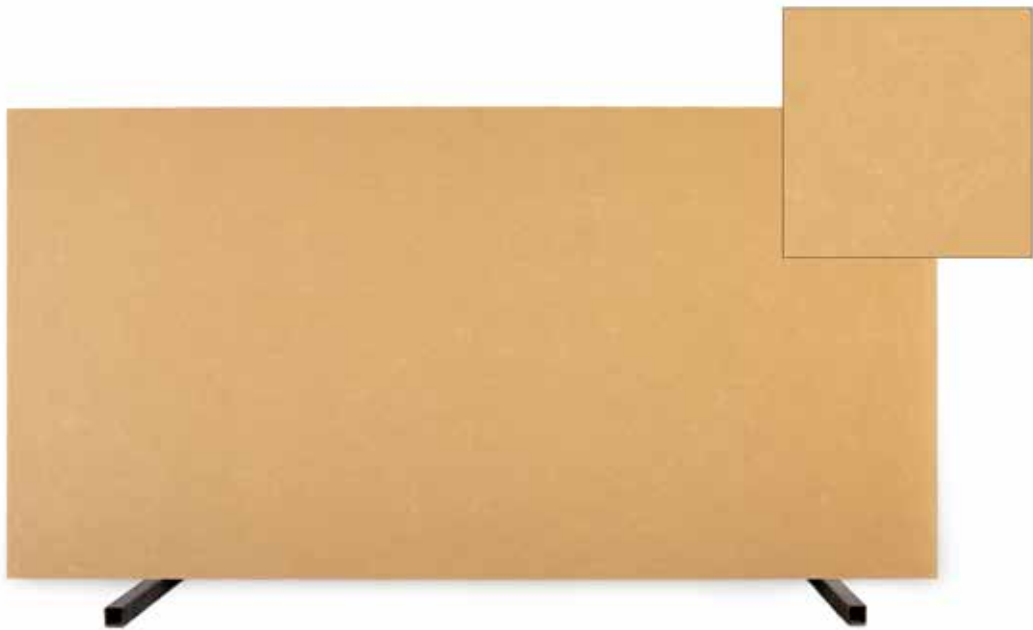
Savoy Grey
Size: 3250 x 1650 x 15 mm



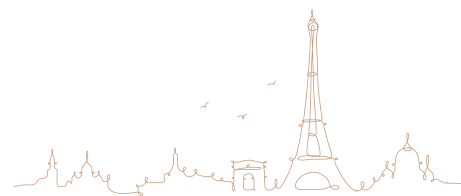
Topaz Cream
Size: 3250 x 1650 x 15 mm



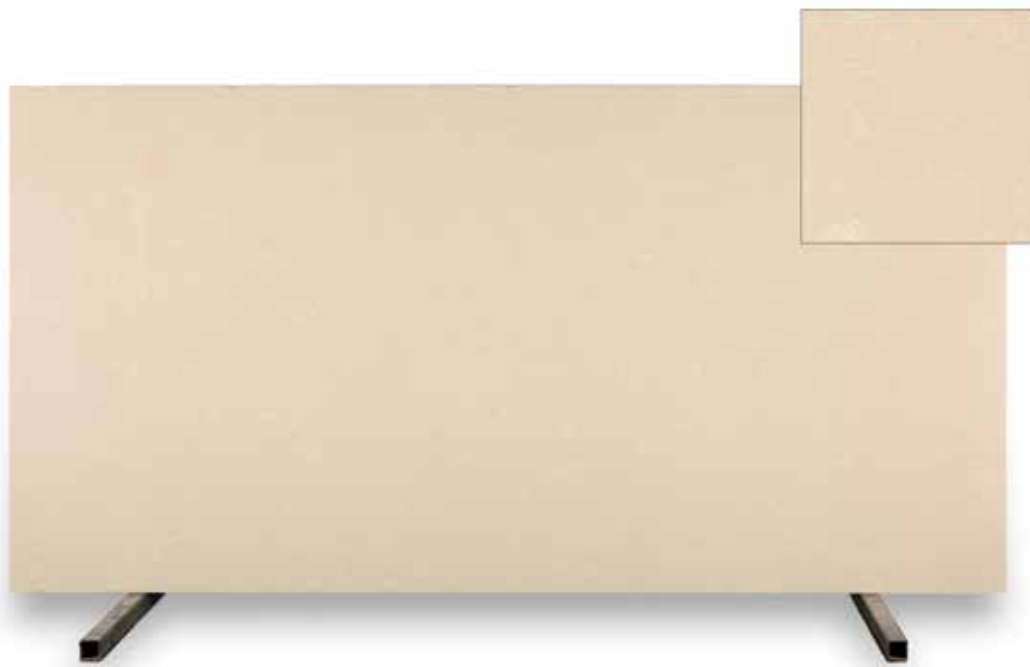
Belgium Beige
Size: 3250 x 1650 x 15 mm



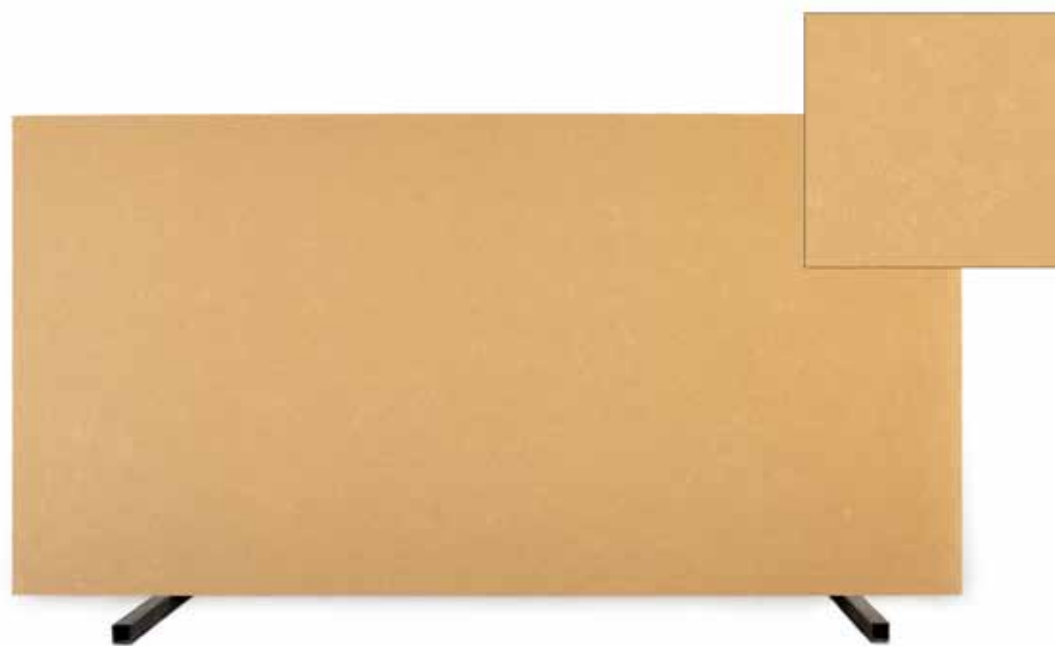
Garnet Beige
Size: 3250 x 1650 x 15 mm



P A R I S
COLLECTION



Clara Crema
Size: 3250 x 1650 x 15 mm



Citrica Beige
Size: 3250 x 1650 x 15 mm

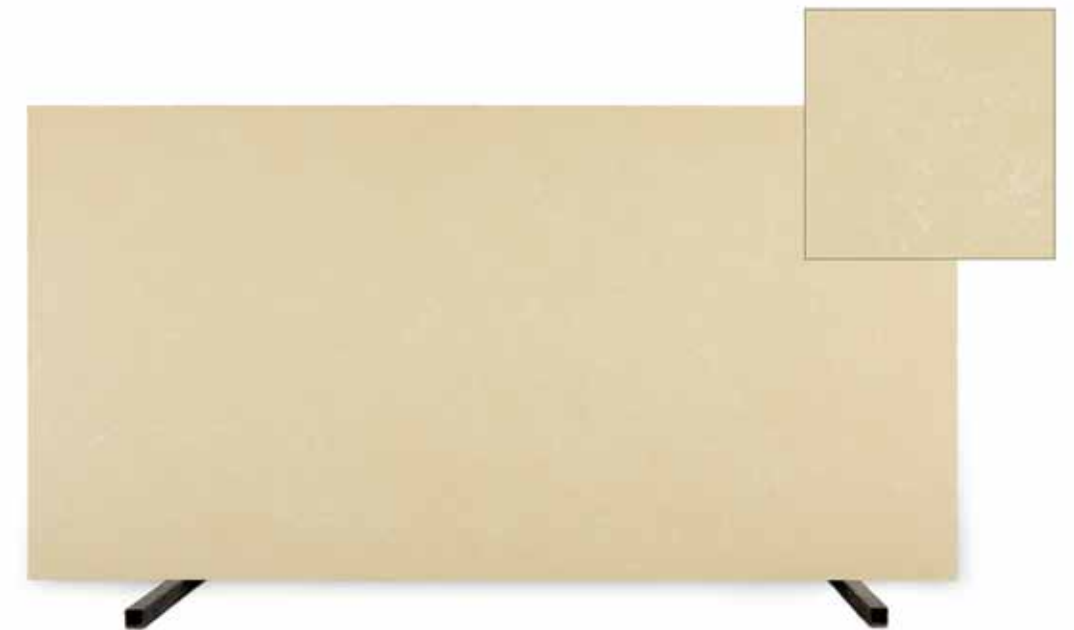




PARIS
COLLECTION



ELEVATED LIVING
haique[®]
— Luxury Surfaces —



Romolo Beige
Size: 3250 x 1650 x 15 mm



Palatino Grey
Size: 3350 x 1650 mm x 15 mm

www.haiquequartz.com



You dont need the universe
if you have MILAN

MILAN COLLECTION

Milan is the only city that truly deserves the title of "fashion capital of the world". This cosmopolitan city incorporates luxury, art, food and culture. It's the ideal location for fashionistas and industry enthusiasts. We at Haique, take direct inspiration from the atelier led classic fashion. The slabs from this collection are all about the amalgamation of the city's renaissance period and modern era. We have tried to infuse the city's art and culture in our slabs for a more authentic look.

www.haiquequartz.com



Glacier White
Size: 3250 x 1650 x 15 mm



Grigio Deserto
Size: 3250 x 1650 x 15 mm



Rosa Black
Size: 3250 x 1650 x 15 mm



Fossil Nero
Size: 3250 x 1650 x 15 mm



MILAN
COLLECTION



ELEVATED LIVING[®]
haique
— Luxury Surfaces —



Mont Claire
Size: 3250 x 1650 x 15 mm



Magma Grey
Size: 3250 x 1650 x 15 mm



ROME TERRAZZO COLLECTION

Fashion and Rome have a long history together. Roman clothing consisted of togas, tunics and stolas, but different types and colours distinguished members of public from those in positions of power. Most Romans wore colourful clothing, and dyed their clothes in purple, indigo, red, yellow, etc. These colours have been represented in our terrazzo collection.



Calculus
Size: 3250 x 1650 x 15 mm



Verde Alb
Size: 3250 x 1650 x 15 mm



Vector
Size: 3250 x 1650 x 15 mm



Palazzo Black
Size: 3250 x 1650 x 18 mm



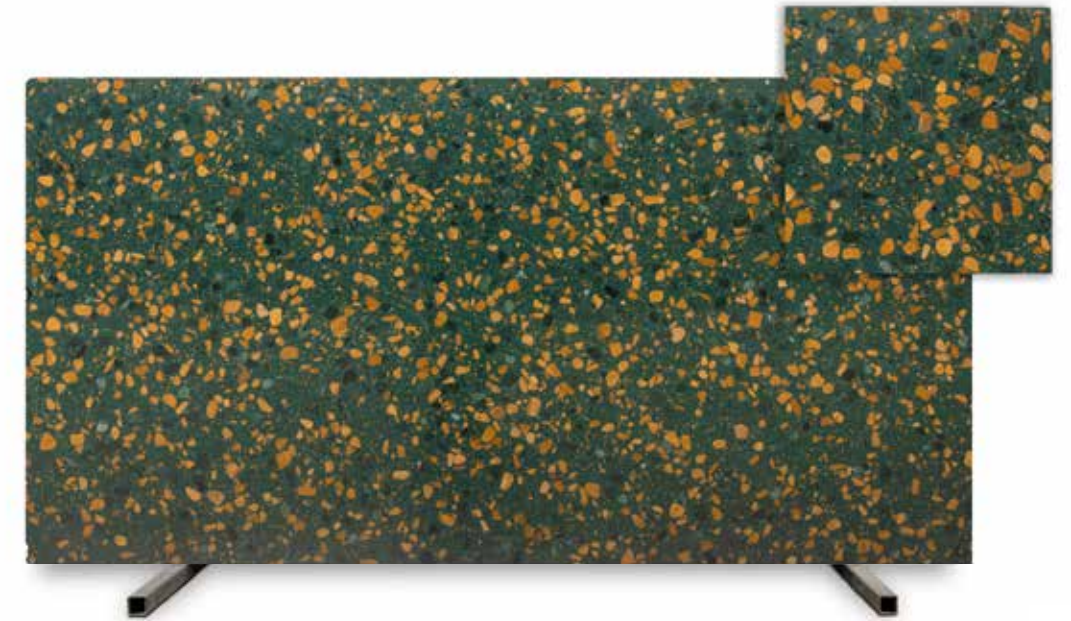
Palazzo
Size: 3250 x 1650 x 18 mm



Green Exotica
Size: 3250 x 1650 x 18 mm



Classico
Size: 3250 x 1650 x 15 mm



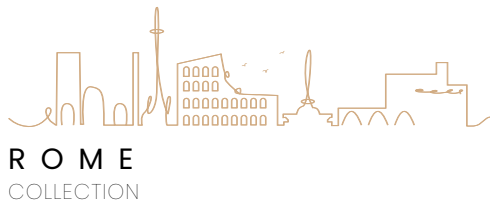
Oro
Size: 3250 x 1650 x 18 mm



Alien Green
Size: 3250 x 1650 x 15 mm



Regium
Size: 3250 x 1650 x 18 mm



Graphite
Size: 3250 x 1650 x 15 mm



Iceberg
Size: 3250 x 1650 x 18 mm

TECHNICAL SPECIFICATIONS

| TEST PERFORMED | TEST STANDARD | RESULTS |
|--------------------------------|---------------|------------------------|
| App. Desnity kg/dm³ | ASTM C 97 | 2.40 – 2.55 |
| | EN14617-1 | 2.40 – 2.55 |
| Water Absorbtion % | ASTM C 97 | <0.1 |
| | EN14617-1 | <0.1 |
| Flexural Strength (Mpa) | ASTM C 880 | 20 – 40 (Dry/wet) |
| | EN14617-2 | 25-35 |
| Dimensional Stability | EN14617-12 | Class A |
| Impact Resistance (joule) | EN14617-9 | 1.5 – 3.5 joule |
| Compressive Strength (Mpa) | ASTM C 170 | 105 – 160 (Dry/wet) |
| | EN14617-15 | 110 – 150 |
| Frost Resistance | DIN 52104 | Complies with Standard |
| Glossiness Reflection | %7-5 | >85% |
| Static Coefficient of Friction | ASTM C 1028 | Dry: 0.8 Wet: 0.6 |

| TEST PERFORMED | TEST STANDARD | RESULTS |
|--|---------------|---|
| Abrasion Resistance | EN14617-4 | Groove Length = 30mm – 40mm |
| | ASTM C 241 | Min 10 |
| Surface Hardness(MohÖs Scale) | EN 101 | 4.0-5.0 |
| Chemical Resistance | EN14617-10 | Class C1 |
| Linear Thermal Expansion (30c – 60 c)C-1 | EN14617-11 | 15 – 20 x 10-4 |
| Fire Classification | EN 13501-1 | Wall Cladding: B-S1-d0. Flooring Stairs: B-f1-S1 |
| Surface Burning | ASTM E 84 | Class A |
| Slip Resistance | EN 14231 | Wet: >3 SRV, Dry: >35 SRV |
| Radiation | GB 6566-2010 | Complies with requirement of standard |
| Thermal Shock Resistance | EN 14617-6 | No visual defects after 20 cycle, Loss in Mass+ 0.02%-0.05% |
| Freeze & Thaw Resistance | EN 14617-5 | No defect after 25 freeze-thaw cycles |
| Surface Slip Resistance HONED 400 | DIN 51130 | R9 |
| MARBLE SLAB SIZE: 325 X 165 CM | | |



"Haique brings the world's very best to India, with an exemplary product range that is crafted with the finest materials and outstanding machinery, to ensure elevated living for your home and workspace."

- Siddhant Lunawath
Co - Founder

THE LEGACY OF



ESPRIT STONES PRIVATE LIMITED

Factory:

Haique Stones Private Limited, Khasra No / Araji 1958
Village - Rathujanagadiya Ahead , Off Negadiya Toll Plaza Udaipur
Nathdwara Highway, Teh.-delwara, District- Rajsamand, Rajasthan

Registered Office:
SP-1, Udhog Vihar,
Sukher Industrial Area,
Udaipur - 313004,
Rajasthan, India

Factory:
Khasara No. 1106 to 1109,
Kukdeswar Mahdev Road,
Lakhawali, Udaipur - 313011,
Rajasthan, India

Mumbai Office:
12, Midas, Sahar Plaza Complex,
J.B. Nagar, Andheri East,
Mumbai - 400059, India
Email: mumbai@haiquequartz.com

Branch Offices:

Delhi | Nagpur | Kolkata | Bangalore | Hyderabad | Ahmedabad

Accreditations:



